



All Rights Reserved

Materials and specifications are subject to change without notice.
Featured machines in photos may include additional equipment.
See your XCMG dealer for available options.



CV83U/CV83PD

Single Drum Vibratory Rollers



www.xcmg.com

XCMG Regional Departments:

Europe	(+86-516) 87739238 87739271 87739228	Africa	(+86-516) 87735009 87739222 87739283
West Asia & North Africa	(+86-516) 87739252 87739202 87739223	Central Asia	(+86-516) 87739218 87739236 87739538
Asia-Pacific	(+86-516) 87739500 87739529 87739233	America	(+86-516) 87739285 87739551 87739715

XCMG NORTH AMERICA CORPORATION
Add: 5145 Schirlls St. Las Vegas, NV 89118

Tel: +1 407 9689320
E-mail: jack-xie@xcmg.com

XUZHOU CONSTRUCTION MACHINERY GROUP IMP. & EXP. CO., LTD
Add: No.1, Tuolanshan Road, Xuzhou Economic Developing Zone, Jiangsu, China 221004

Fax: (+86-516) 87739230
E-mail: export@xcmg.com

Engine

Model : Cummins QSB3.3
Rated Power : 99hp@2200rpm
74kW@2200rpm

Compaction Performance

Working Mass : 8000 kg (17600 lb)
Static Linear Load : 23.9 kg/cm (133.3 pli)
Centrifugal Force : High Amp:115kN (25852 lbf)
Low Amp:102kN (22930 lbf)

Vehicle Performance

Max.Vehicle Speed : 10.0 km/h (6.21 mph)
Min.Turning Radius : 5360 mm (211 ")
Max.Gradeability : 45 %

DETAILED INTRODUCTION OF PRODUCT HIGHLIGHTS

Superior Power Performance



- Cummins QSB3.3 engine, 74 kW (99hp) @ 2200 rpm;
- High capacity radiator, for cooling under extremely conditions;
- Air pre-filter and air filter constitute two-stage filtration system;
- Fuel filter, oil filter and oil replacement cycle is up to 500 h.

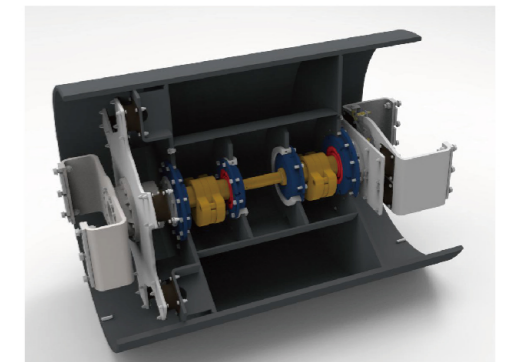
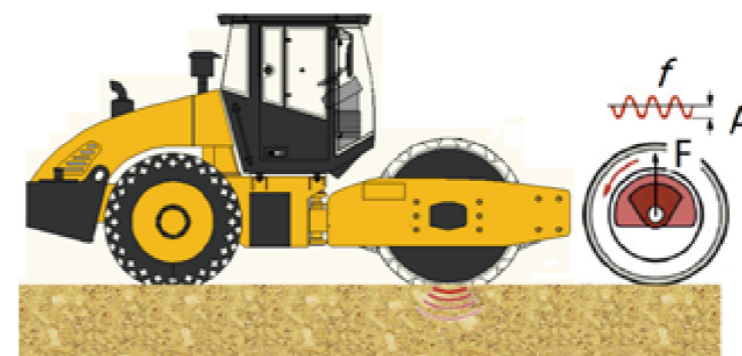
Strong Driving Ability

- DANFOSS variable plunger pump and piston motor constitute the closed hydrostatic system;
- DANA heavy load wet drive axle;
- Anti-slip system ensures driving ability under toughest conditions;
- Two gear infinite variable speed.



Excellent Compaction Performance

- DANFOSS plunger pump and piston motor constitute the hydrostatic vibration system;
- Dual frequency, dual amplitude, suitable for various construction conditions;
- Inner cylindrical vibrating chamber structure, high rigidity and strength;
- Dedicated vibration bearing, high reliability, long service life.



Padfoot Shell And Tire Specification

- Customer may, according to the requirements of the construction, choose smooth drum, padfoot drum and padfoot shell;
- Optional agriculture tire or diamond tire, meeting the demands of the various working conditions.



Safe And Comfortable Control Platform

- ROPS/FOPS cab. The interior space is large, wide vision, good sealing performance, low noise;
- Configuration of air conditioning further improves the driver's comfort;
- Suspension seat. Good damping effect, fore and back, up and down adjustable.



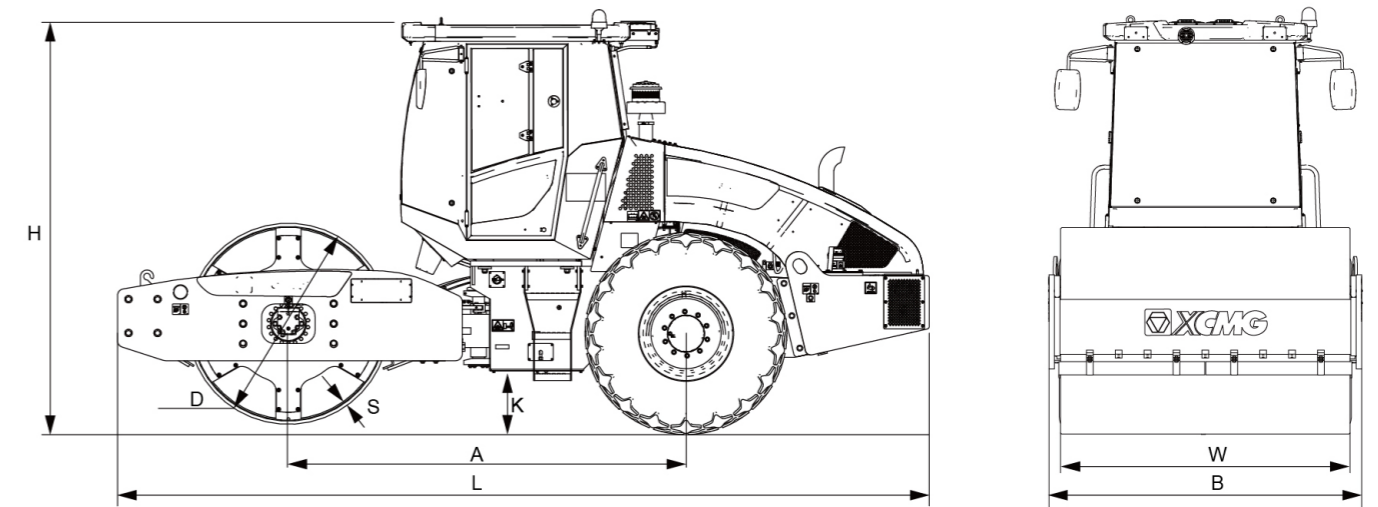
Convenient Maintenance

- Engine hood is electronically controlled hydraulic open mode, easy to operate;
- With a near verticle opening, the hydraulically actuated hood provides good access to the various filters and maintenance points.



TECHNICAL PARAMETERS

Category	Item	Unit	Parameter	
			CV83U	CV83PD
Weight	Operating Weight	kg(lb)	8000(17640)	8000(17640)
	Weight At The Drum	kg(lb)	4100(9040)	4100(9040)
	Weight At The Axle	kg(lb)	3900(8600)	3900(8600)
	Static Linear Load	kg/cm(pli)	24.4(136.3)	-
Driving Performance Data	Driving Speed (Gear I)	km/h(mph)	0~4.5(0~2.79)	0~4.5(0~2.79)
	Driving Speed (GearII)	km/h(mph)	0~10(0~6.21)	0~10(0~6.21)
	Theoretical Gradeability	%	45	45
	Minimum Turning Radius	mm(")	5360(211)	5360(211)
	Tire Specification		405/70-24-14R1TL	405/70-24-14R1TL
	Ply Rating		14	14
	Air Pressure	kPa	380~400	380~400
Power System	Engine Manufacturer		Cummins	Cummins
	Type		QSB3.3	QSB3.3
	Rated Power	kW(hp)	74(99)	74(99)
	Rated Speed	rpm	2200	2200
Vibratory System	Vibrational Frequency	Hz(vpm)	30/40(1800/2400)	30/40(1800/2400)
	Nominal Amplitude	mm(")	1.8/0.9(0.071/0.035)	1.8/0.9(0.071/0.035)
	Centrifugal Force	kN(lbs)	115/102(25853/22930)	115/102(25853/22930)
Volume	Engine Oil	L(gal)	10(2.64)	10(2.64)
	Fuel Tank	L(gal)	200(52.84)	200(52.84)
	Hydraulic Tank	L(gal)	100(26.42)	100(26.42)
	Coolant	L(gal)	14(3.7)	14(3.7)
	Front Drum Chamber	L(gal)	45(11.89)	45(11.89)
	Front Drum Reducer	L(gal)	2.5(0.66)	2.5(0.66)



UNIT: mm(")

Dimension	A	B	D	H	K	L	S	W
CV83U	2680(105.5)	1860(73.2)	1220(48.0)	2840(111.8)	345(13.0)	5310(209.1)	18(0.7)	1680(66.1)
CV83PD	2680(105.5)	1860(73.2)	1220(48.0)	2890(113.8)	345(13.0)	5310(209.1)	18(0.7)	1680(66.1)

MACHINE OPTIONS

Application	Layer Thickness mm(")	Smooth Drum CV83U	Padfoot Drum CV83PD
Sandy Soil	150-300(5.9-11.8)	●	■
	300-450(11.8-17.7)	▲	■
Clayed Soil	150-300(5.9-11.8)	▲	●
	300-450(11.8-17.7)	■	▲
Sludge, Coal, Ash, Hard Wastes	150-300(5.9-11.8)	▲	●
	300-450(11.8-17.7)	▲	▲
Pebbles, Gravel, Solid Foundation	150-300(5.9-11.8)	▲	■
	300-450(11.8-17.7)	■	■

■ Available ▲ Good ● Excellent